

Instructions for retrieving Hydrologic Information from the BYU-HIS Database

The sections below describe how to retrieve data from the BYU-HIS database. Collected hydrologic and water-quality data can be retrieved from the BYU-HIS database using HydroDesktop software

Downloading data using an off-campus computer

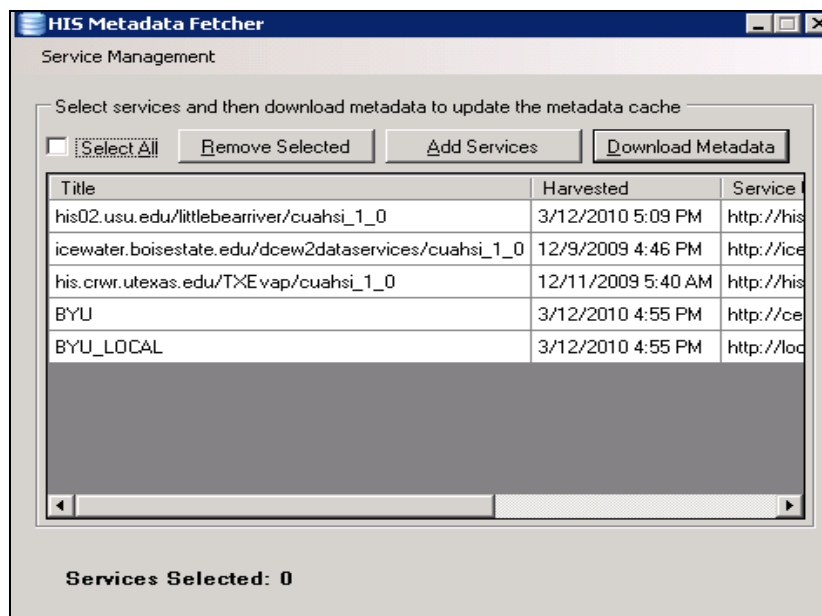
To download the data from an off-campus computer follow the steps outlined below:

1. Download HydroDesktop form CUAHSI website:

<http://hydrodesktop.codeplex.com>

2. When you finish installing HydroDesktop, launch the application.
3. In the tab menu select the Metadata Fetcher icon. The following screen should

display:



4. Select add service and choose a title for the web service (BYU) and enter the following web service address in the Service URL:

http://cehis.byu.edu/ODserv/cuahsi_1_0.aspx
5. Select download metadata and choose OK when prompted. This may take a few minutes.
6. Close Metadata Fetcher.
7. You can now search for the data by choosing the search option and select Search in the Local Meta Data Cache. You can also choose to search the HIS central server.
8. Follow the instructions to find and retrieve the data.

Downloading data using an on-campus computer

You are not allowed to install programs on any of the campus computers without permission from the department. However, HydroDesktop is installed in the BYU local HIS Server. You can access the server from a desktop remote connection. To remotely access the server follow the steps outline below:

1. On the start menu select Programs, then Accessories, and choose Remote Desktop Connection. The following screen should appear.



2. For the computer name enter: **cehis.et.byu.edu**
3. In the following screen enter the server username and password.
4. Open HydroDesktop and search for the desired data.

Alternatively, you can use the HydroSeek search engine at <http://www.hydroseek.org/search/> to find and download hydrologic data, although the features are more limited.

NOTE: Username and password for the server is not shown here. To obtain the username and password contact a Deer Creek Research Team member.